

Congregation Part **Glory in the Highest**



From high-est hea__-ven, the Liv-ing Word, Je-sus our
Won-der-ful Couns'-lor, the Migh-ty God, E-ter-nal



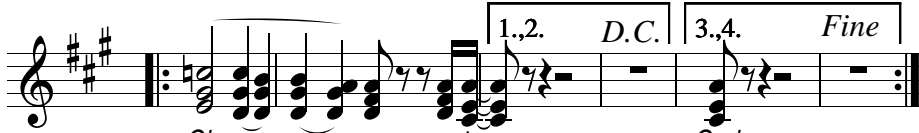
Sa__-vior is come to earth. Word of the Fa__-ther, the great "I
Fa__-ther, the Prince of Peace. Laid in a man__-ger, the Pro-mised



AM," the Lord In - car__-nate, Pre - cious Lamb.
One, for all the na__-tions, Mes-si - ah King.+



Glo-ry, in the__ high-est, glo-ry, in the__ high-est.



Glo - ry to God.



You are wor__ thy, Lord,
You are wor__ thy Lord, we will praise__ Your name,



fo-re-ver, a-men. -men
we will lift__ You up, fo-re-ver, a-men.

Glory in the Highest

light Bossa style

2 8 $\text{♩} = 69$ $\text{F}\sharp\text{m}7$ Congr. Women $\text{Bm}7$ $\text{E}7$

Worsh. Team Alto suggest begin x3

You are wor - thy, Lord

Congr. Men suggest begin x5

Yes, we will praise and lift Your Name

You are wor - thy Lord, we will praise Your name,

2 9 Repeat as

$\text{D}7$ $\text{G}\sharp7(+11)$ $\text{C}\sharp7(-9)$ | FINAL $\text{D}7$ $\text{G}\sharp7(+11)$ $\text{C}\sharp7(-9)$

for-e-ver, a-men. Lord for - e-ver, a-men.

for-e-ver, a-men. (Name) for - e-ver, a-men.

we will lift _You up, fo-re-ver, a-men. we will lift _You up, fo - re-ver, a-men.

3 1 $\text{A}(\text{no}3)$ C G C G D A D A

a bit broader

Glo - ry, in the _ high-est, glo - ry, in the _ high-est.

3 7 C $\text{G}\text{sus}\text{G}$ G/D Dsus D | 1,2,3,4. A^2 | 5. A

1,2. Glo - ry to God.
3,4. Prai - ses to God.
5. A - men A-men.

1,2. Glo - ry to God.
3,4. Prai - ses to God.
5. A - men A-men.

1,2. Glo - ry to God.
3,4. Prai - ses to God.
5. A - men A-men.

Glory in the Highest

Guitars

1 *A*² *D/A A* *D*² *E sus E*

From high-est hea__-ven, the Liv-ing Word, Je-sus our Sa__-vior is come to
Won-der-ful Couns'-lor, the Migh-ty God, E-ter-nal Fa__-ther, the Prince of

5 *A*² *D/A A* *F#m⁷ sus⁴* *Bm⁷ D⁷* *A*²

earth. Word of the Fa__-ther, the great "I AM," the Lord In- car__-nate, Pre-cious Lamb.
Peace. Laid in a man__-ger, the Pro-mised One, for all the na__-tions, Mes-si-ah King.+

1 0 *C G* *C G* *D A* *D A*

Glo - ry, in the_ high-est, glo - ry, in the_ high-est.

1 4 *C G sus G* *G/DD sus D* *A*² *A*

1-8. *after 2 D.C.* 9. Fine -End
after 4 CODA God.
1to6. Glo__ - ry to God.
7.8. Prai__ - ses to God.
9. A__ - men, A-men.

Repeat as desired: suggested 8x, men begin x5 *last time*

1 9 *F#m⁷ Bm⁷ E⁷ D⁷ G#⁷ C#⁷* *A (no 3) D.S. al fine*

Congr: Men You are wor__ - thy, Lord, fo-re-ver, a-men. -men